



**REGISTRATION
AUTHORITY**
FOR CHARTERED PROFESSIONAL ENGINEERS

CPEng Rules Change Consultation 2024

Agenda

1. Introduction
2. Classes
3. Continued registration
4. Complaints
5. Implementation and timelines
6. Consultation webinars
7. Close



Introduction

Why are we here?

Engineering New Zealand is the Registration Authority for Chartered Professional Engineers. We have a duty to proactively manage the CPEng system. To fulfil this duty, we need to make sure the CPEng Rules are fit-for-purpose.

Regulators, the public and registrants rely on the CPEng system.

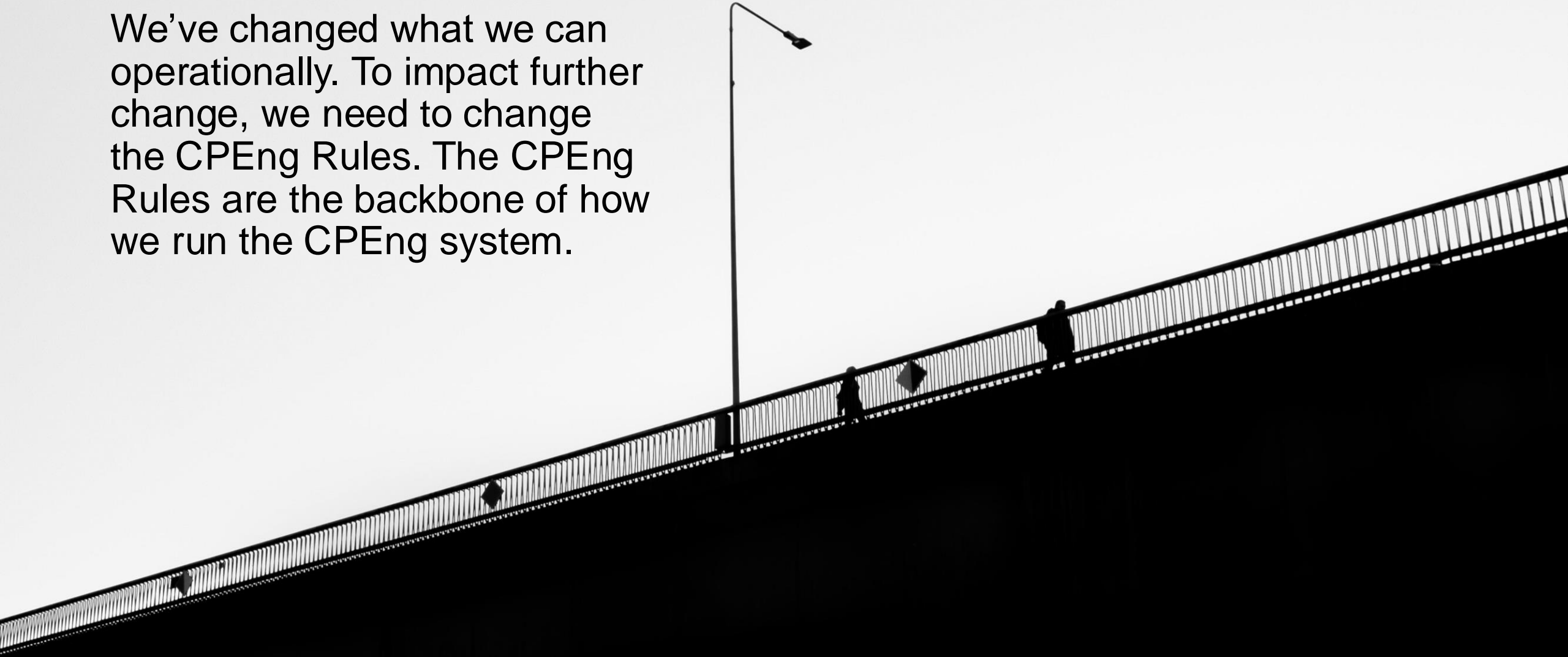


Where have we been?

- Consultation in 2020
- Operational changes:
 - Establishment of the CPEng Board
 - Elimination of the reassessment backlog
 - Introduction of the Structural Triage Panel
 - Improved assessment and reassessment guidance
 - Strengthened referee checking
 - Improved relationships with regulators (Building Consent Authorities)
 - Reduced complaint timeframes

Rules changes are now required

We've changed what we can operationally. To impact further change, we need to change the CPEng Rules. The CPEng Rules are the backbone of how we run the CPEng system.



Where are we going?

CPEng Rule changes proposed build on the 2020 consultation.

We want to:

1. Introduce new classes of registration
2. Change the continued registration process
3. Strengthen the complaints and disciplinary system



Approach

Our work is focused on:

1. Improving public safety
2. Ensuring the system works for the public, regulators and profession
3. Improving the quality of outcomes

Classes

Class proposal

- According to our Act, the Registration Authority must have Rules for classes
- Currently all registrants are registered as CPEng and have passed the *minimum standard* for registration as CPEng. This means that they are appropriately qualified and have undertaken a competence assessment against 12 engineering elements. They are in a **general** class.
- We are proposing the addition of **new** classes, where there is one or more of the following -
 1. Significant risk of public safety harm posed by substandard work
 2. Regulatory need
 3. Readiness of the profession for a class to be introduced

Process



Examples

Current register specificity:

- Design verifiers (pressure equipment, cranes and passenger ropeways)
- Recognised engineer (dam safety)

Possible classes:

- Heavy vehicle engineering classes
- Fire class
- Geotechnical class(es)
- Structural classes



Introducing classes is a phased process

- **Phase I:** Introduction of Rules that allow for the addition of classes (this proposal)
- **Phase II:** Planning and consultation on class specific Rules
 - New guidance on classes
 - Consultation on proposed classes

Practice fields

We propose retaining practice fields on the register. This is in keeping with international precedent and supports international mobility, as well as the ability of the public to understand the practice field of registered engineers.



Registrant details

Full name

Registration number

Business email

Service region

Practice field

Notices

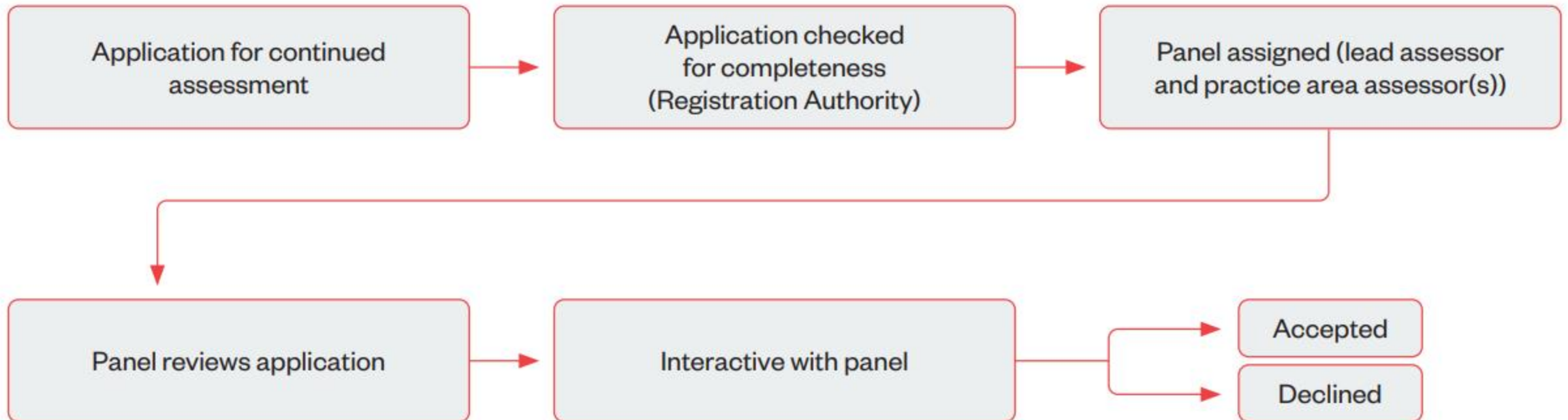
Registrations

Registration	Status	First registration ...	Next re-assessme...	Suspension reason
Recognised Engineer – Dam Safety Assurance Programme				
Chartered Professional Engineer				

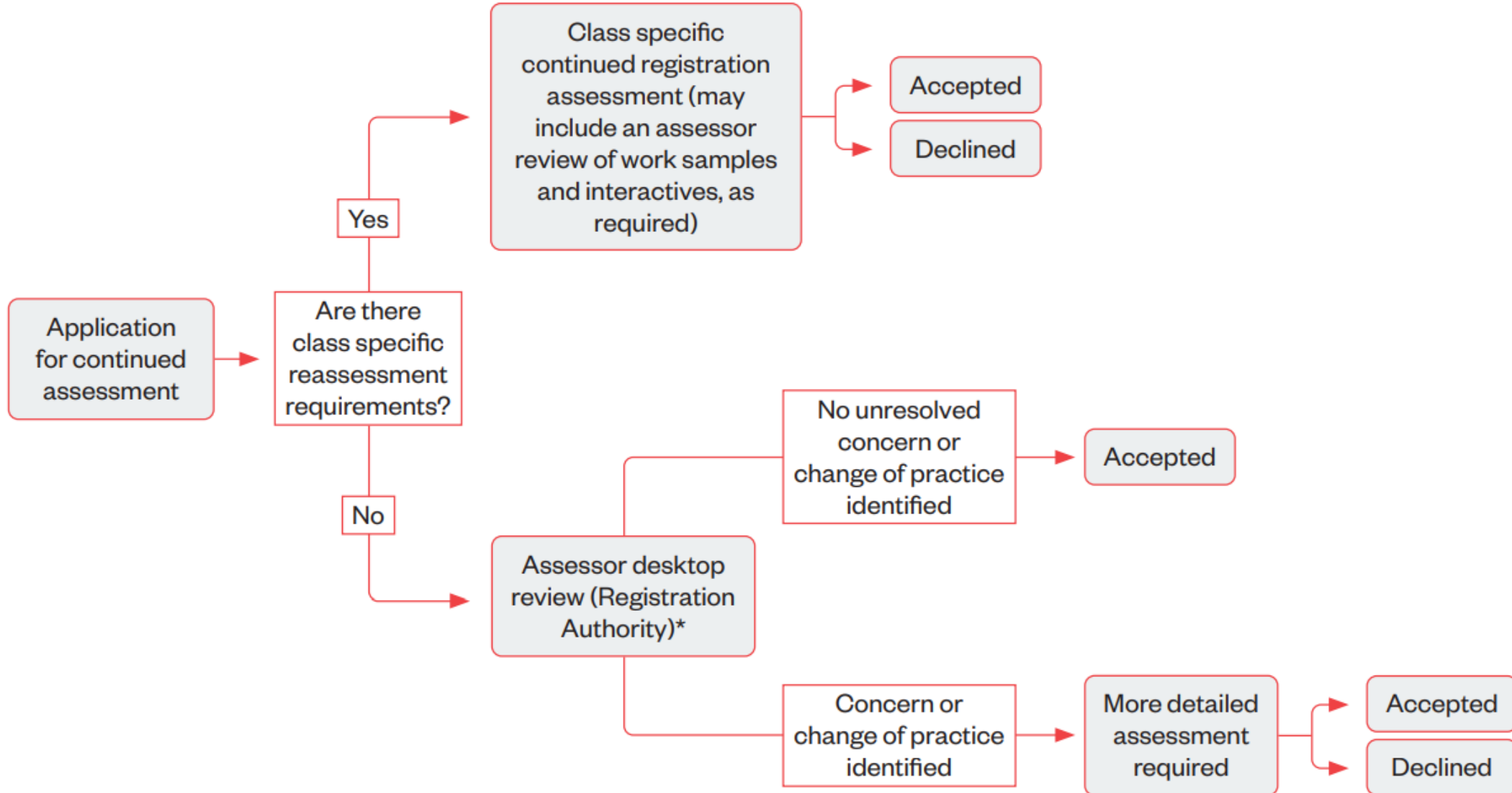
Continued registration

Current process

“One size fits all”



Proposed process



Desktop review

Assessor to review:

- **References**
- **Concerns/complaints**
- **Declarations**, including changes to practice field(s)
- **Curriculum vitae**
- **Continued professional development**



Additional requirements on registrants

1. Annual commitment to the Code of Ethical Conduct and Continued Professional Development
2. 'Fit and proper person' self-disclosure

Complaints

Changes to complaints processes

- Addition of a referral to the Registrar for a competence assessment
- Additional powers to investigating committees to recommend a competence assessment to determine if the person meets the minimum standard for continued registration or require the engineer to offer an apology, be censured, undertake training, mentorship or counselling.
- Allow the Registration Authority to take forward complaints after investigating committee
- Other procedural matters

Membership of the committees

We propose the following changes to investigating and disciplinary committees:

- Broadening membership to allow for the appointment of individuals with relevant qualifications (such as a lawyer or investigator)
- Permitting non-engineers to Chair
- Ensuring that the majority of members on committees are engineers



Implementation and timelines

Our work over the next few years...

Should the changes proposed proceed, we will:

- Issue new guidance on classes
- Issue new guidance on complaints
- Update guidance on continued registration
- Consult on classes (to be phased)



Timeline

- Consultation began on Friday 11 October and closes on Friday 29 November
- Decisions will be made by early 2025, after submissions analysis
- A summary of submissions will be released
- New Rules will be published as soon as practicable
- New guidance will be published mid 2025
- The Rules will come into force from 1 January 2026

Webinars

Discussion



[registrationauthority.org.nz](https://www.registrationauthority.org.nz)



CPEngConsultation@engineeringnz.org